



Douglas County

Historical Society

Timeless Topics

It's (Still) About You and it's About Time

by Rachel Barduson

INSIDE THIS ISSUE:

News from Executive Director	1-2
Celebrating Arlue Beheng	3
New Faces at DCHS	4
Tidbits	5
Christmas at the Society	6
Bake Sale Pre-Order Form	7
Roots Cellar	8-9
Accessions	10
Membership	11, 13
DCHS Merchandise	12

Timing is everything. While spending the past several months re-evaluating and researching the five year vision and plan to raise funds to build a new history center the word “sustainability” continued to crop up. We have concluded that it’s just not the right time to build a new history center. Repeated time and again were the phrases, “It’s one thing to raise the funds to build a building. It’s another story to keep our Historical Society feasibly sound while sustaining another “building” to preserve history. Is a new history center necessary? Why do we need a new building when many don’t realize we have an old one? How will we maintain the existing historic house, its grounds and parking lot?”

Many questions came into the conversation. “Do you currently have enough revenue to sustain a \$2.5M building? How will you continue to staff it, operate it in the capacity that is needed to produce revenue, heat it, light it? How will you maintain the new building and grounds?”

We quickly realized it was time to go back to the drawing board, back to the fundamentals of the Douglas County Historical Society, study our mission, and remember how we got here in the first place. To keep it simple, the fundamentals of the Historical Society are “listed” in our mission: to discover, preserve and disseminate the history of Douglas County and its people. We house, preserve and provide resources, i.e. documents, records, photographs, collections. We have an excellent corps of volunteers willing to share their expertise in providing help to visitors. Our staff is knowledgeable and well trained in providing the services needed and asked for. We share history programs in the community and partner with other non-profit entities in the community to bring history alive and enhance each other. We host special events which help raise funds to share Douglas County history, sustain our membership and our funds.

Anyone who utilizes our Society will discover our local history and discover

the value of preserving history for future generations. Basic fundamentals. Next, how did we get here, to this house, to this place? Another basic fundamental: Through hard work and determination, the house was preserved when it was gifted to the Historical Society. Today, everything within the walls of the house is a gift given to the organization. These gifts are referred to as accessions. Gift-giving has made the difference in our Society.

In addition to accession items, other ways of giving that have made a difference are the endowment gifts and estate gifts presented to the organization thus sustaining the Society through the years. Those gifts, beginning in the mid-1980s, have been critical in fulfilling our mission, and have provided perpetual funds for preservation and maintenance needs of the historic Knute Nelson house. They have made the difference. Grant awards throughout the years have also provided funds for preservation projects and maintaining the house,

IT'S (STILL) ABOUT YOU ... (CONT)

including replacing windows and other major renovations. Grant awards have provided technical assistance and for funding book projects and assorted program efforts.

Gifts have sustained us. The land that we were planning to build on was a gift given to us by Knute Nelson Foundation. And, in a broader sense, back to the fundamentals, the Historical Society is now a gift to this community.

In today's thinking, we believe that in order to sustain our Society, it is time to give back to the community through the gifts that have been given us. That being said, our duty continues to not only be preserving history, (we are about the past after all), but to provide an outlet (and document) what is happening today. We need to optimize our resources, our programs, our facility. We need to enhance our existing historic house with something that the entire community can enjoy, as a gift.

The power of shared vision, of giving back to the community, and thinking outside the box began as conversation shifted from building a history center to other uses for the 1.5 acres given the Society. We soon "landed" on a new idea.

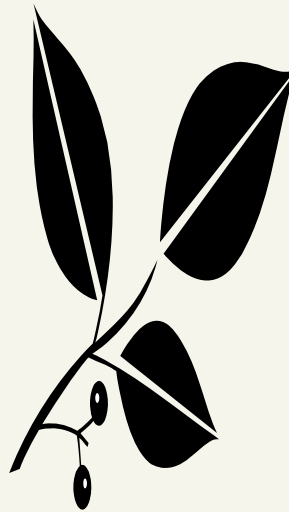
We have now started to formulate "Plan B" which is the planting of a Heritage Garden on the land directly south of Knute's house.

Knute's land, after all, was

a 120 acre farm home-
stead. We could incorporate heirloom seeds given by members, historical perennials, given by members. We can make it a "history" learning garden for children and adults. We can design a walking path, with family stepping stones, given by members, leading to the historic house filled with more information. We can design a garden fashioned after Noonan's "Little Bit of Heaven" with gifts of park benches and picnic tables, and trees, given by members. The ideas are endless, exciting and manageable. It will be YOUR garden and it will be a gift to this community. We will always need funds to maintain and sustain this Historical Society. As we formulate our heritage garden I encourage anyone who is interested in the planning and design process to give me a call. It is our intention to form a committee this fall, including the establishment of the garden fund, selling "stepping stones" to form a path through the garden and up to the front porch of the Historical Society. (The south parking lot, which is in dire need of resurfacing, will also be redesigned and completed, allowing for the garden to be adjacent to the house.) "Naming rights" of the garden and parts of the garden, depending on donor gifts are yet to be discussed, but will be part of the plan.

Ultimately, the garden will be an educational/interpretive piece in telling the history of Douglas County, and an enhancement to our jewel, Knute's Historic residence.

So now is the time to move in a new direction with Plan B. It is very exciting. It's still about time and it's still about YOU. If you are interested in the planning stages and subsequent volunteering on the Heritage Garden, please give me a call at 762-0382.



*"We believe
that in order to
sustain our
Society, it is
time to give
back to the
community
through the
gifts that have
been given us.
We need to
enhance our
existing historic
house with
something that
the entire
community can
enjoy, as a
gift."*

CELEBRATING A DCHS TREASURE

A celebration of Arlue Beheng's work as hostess of the Society was held on August 27 at an open house retirement party. Arlue began her employment with the Society in 1999 and has been "a star" ever since. Best known for her knowledge and ability to share the history of Douglas County and Knute Nelson, Arlue has spent many hours taking visitors through the house, serving as tour guide on bus and pontoon tours, giving community programs and much more. As Nicolina Nelson, Arlue told the story of the family's journey from Dane County, Wisconsin to their settlement in Alexandria, Minnesota. Thank you Arlue for your years of service to the Douglas County Historical Society. Congratulations on a well-deserved retirement!



HANGAR DANCE 2011

Third Annual WWII/ Big Band Era Hangar Dance
 Saturday, June 11, 2011
 Alexandria Airport
 Mark your calendar and watch for details.
 New surprises for a fun-filled historic day!



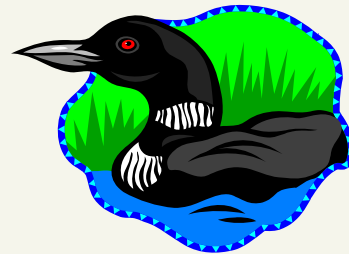
DCHS AT THE FAIR



Pictured is Board of Directors Secretary **Kaye Zebarth** (on the right) and on the left is **Jan Thorelksen**. Thank you to everyone who visited us at our display booth at the Douglas County Fair!



HISTORY TOUR TAKES TO THE LAKES



History tours of Lakes Darling, Carlos and LeHomme Dieu were a hit again this summer. All tours were offered in partnership with District 206 Community Education.

YARD SALE MOVES INDOORS

As you do your fall/winter clean-up and remodeling please remember that the annual yard sale is a growing thing at the Society. More "large ticket" items are always needed. Plans for the 2011 sale include moving from the parking lot to an indoor location. Watch for details!

Also, a huge thank you to Society members **Pat Kennedy** and **Deb Trumm** for their hard work in "chairing" this event this year and the extra hours donated to price all items.

Mark your calendar for **May 19, 2011**.

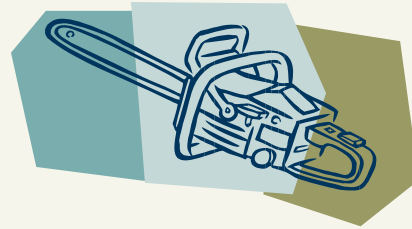


KEEPING OURSELVES TRIM



Maintenance of the house and grounds continue each year. This summer we took care of overgrown branches and pruning of trees and shrubs.

We can see the house from the road and the Gables again!



CLOTHING COLLECTION UPDATE



Thank you for your consideration in the giving of your family textile heirlooms. However, because of the need to assess and preserve what we already have, no clothing/textile accessions will be accepted at this time, or until further notice.

A complete inventory and assessment of the Society's textile/clothing collection has been initiated and staff is developing a plan for preservation steps and storage. A grant proposal has been written and submitted to the Minnesota Historical Society, requesting funds for assistance with this project. If grant monies are awarded, a professional textile consultant will be working with staff and volunteers on this project.

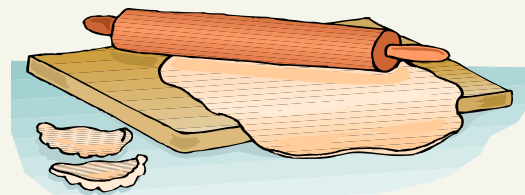
SHARE YOUR TALENT WITH THE SOCIETY!

"Christmas at the Society"
Saturday, December 4, 2010
10 a.m. – 1 p.m.

Christmas at the Society will be more than an Open House and Ethnic Bake Sale this year. Yes, the open house will happen, and yes, there will be ethnic Christmas delicacies available for sale, along with those ethnic food demonstrations. In addition to the traditional piece of *Christmas at the Society*, we are encouraging members to donate an item of their choice to sell in the new "Santa's Workshop" which will be featured throughout the house.

What is your niche, your hobby or craft?

We are asking members to share their talent by bringing in hand-crafted items, woodworking items, or baked and canned food for Santa's Workshop. Maybe it's a wall-hanging or a knitted/crocheted item? Donations will be accepted throughout the fall. This will be a perfect way to share your talents with the Society. It's interesting to see the many hobbies of our members and we thank you for your willingness to share! Call with questions, 762-0382.



The Lefse demonstration table is always a popular stop for visitors during the annual Christmas Open House as volunteers have fun preparing this delicious Scandinavian delicacy.

Douglas County Historical Society Annual Ethnic Bake Sale



Do the holidays sneak up on you with no time for holiday baking?
Place your order NOW!

Circle the item of your choice and quantity

- ♦ Fudge 12/ \$3.00 _____
- ♦ Krumkake 6/ \$3.00 _____
- ♦ Lefse 3/ \$5.00 _____
- ♦ Pizelles 6/ \$3.00 _____
- ♦ Rosettes 6/ \$3.00 _____
- ♦ Scandinavian Almond Cake \$8.00 _____

No pre-orders will be taken after October 29, 2010

Pick up your order at DCHS
Friday, Dec 3, 10 AM- 4 PM

NAME _____

PHONE _____

ROOTS CELLAR GENEALOGY GUILD

“ TAKING THE PAST INTO THE FUTURE ”



NATURALIZATION RECORDS

The Minnesota Historical Society Library has naturalization records for all 87 Minnesota counties and the Minnesota Supreme Court. They have been microfilmed and are arranged by county and then by type of record, as described below.

The naturalization process consists of two steps: the

Declaration of Intention (also called First Papers) and the Final Papers (also called Petition and Record). Within each county's records, the First Papers are listed before the Final Papers. Most of the immigrants who became citizens were naturalized in their county of residence. Over the years, there have been various residency requirements determining the length of time that must go by before a person could file for citizenship. If the family moved during this time of application, it is possible that the Final Papers would be filed in a different court than the First Papers. Another possible source for naturalization records is the Minnesota Supreme Court, which includes mostly residents of Ramsey and Hennepin Counties.



YEARS AVAILABLE: The earliest records date from the 1850s and generally asked for applicant's name, county of origin (not city, county, or parish), and date of application. Beginning in 1906, the Immigration and Naturalization Service required a standard form for all naturalizations. The form asked for more detailed information, including names of wife and minor children. County courts began to stop granting citizenship, all naturalizations went through the federal courts. The Minnesota Historical Society does not have federal records.

INDEXES: There is no master index to the Minnesota Naturalization Records. In the naturalization records, persons are not listed in alpha order, but by date of First or Final Papers. Many counties produced separate indexes to assist in locating specific names, which are microfilmed. Some indexes are only for a portion of the records, such as the Final Papers but not the Declarations of Intention. There are also print indexes for many counties; including all names found within records.

WOMEN'S CITIZENSHIP:

Before 1906, very few women's names appear on naturalization documents. Prior to the 1920's, the majority of women became citizens only through their husbands or fathers having achieved citizenship status. In 1922, a change in federal law enabled a wife to obtain citizenship independently of her husband.



MINOR CHILDREN: Minors could derive their citizenship through a parent if they were under 21 at the time the parent became a citizen. Prior to 1906, minor aliens who had lived in the US for three years before becoming 21 and for two years after that could apply for citizenship without first filing a Declaration of Intention. However, they were required to file a Declaration at the time they actually became citizens. After 1906, the names and ages of any minor children begin to appear on the parent's certificate of citizenship.

The Naturalization Records and the microfilmed indexes are available on Interlibrary Loan from the Minnesota Historical Society Library. Printed indexes are not available for loan. The Reference Staff also offers a Fee-Based Research Service for Naturalization Records. For more information on both services, contact the Reference Staff at (651) 296-2143 or reference@mnhs.org.

Genealogy Guild Officers

President:	Jim Ruhl
Vice President:	Marcine Nightengale
Secretary/Treasurer:	Harland Hanson
Program:	Marcy Isackson & Darlene Hanson
Editor, "Roots Cellar":	Dale Braunschweig

The Genealogy Guild is open to anyone who has an interest in genealogy. Anyone, from novices to experienced researchers are welcome. Meetings are held the 2nd Thursday of most months in the lower level of the DCHS. Please call 320-762-0382 for the next meeting date and location.



See following page for list of counties, microfilm collection numbers, and indexes.

ROOTS CELLAR - CONT.

Microfilmed Naturalization Records Available at the Library and through Interlibrary Loan
(microfilmed indexes available ILL; printed indexes not available ILL)

County	Collection	filmed index	print index	Rolls
Aitkin	SAM 176		x	6
Anoka	SAM 140		x	5
Becker	SAM 174	x	x	7
Beltrami	SAM 59	x	x	16
Benton	SAM 167	x	x	5
Big Stone	SAM 178			5
Blue Earth	SAM 135	x		7
Brown	SAM 20	x		17
Carlton	SAM 9		x	8
Carver	SAM 106			5
Cass	SAM 177		x	3
Chippewa	SAM 51		x	6
Chisago	SAM 164		x	8
Clay	SAM 53		x	8
Clearwater	SAM 205	x	x	4
Cook	SAM 10		x	2
Cottonwood	SAM 179			8
Crow Wing	SAM 119	x	x	14
Dakota	SAM 107	x	x	7
Dodge	SAM 21	x	x	4
Douglas	SAM 22	x	x	10
Faribault	SAM 203	x		9
Fillmore	SAM 23	x	x	6
Freeborn	SAM 24	x		9
Goodhue	SAM 55	x		12
Grant	SAM 25	x	x	4
Hennepin	SAM 43	x	x	89
Houston	SAM 180		x	4
Hubbard	SAM 181	x	x	4
Isanti	SAM 172		x	5
Itasca	SAM 65	x	x	18
Jackson	SAM 26	x		5
Kanabec	SAM 182		x	4
Kandiyohi	SAM 52	x		12
Kittson	SAM 173		x	7
Koochiching	SAM 294	x		14
Lac qui Parle	SAM 183			6
Lake	SAM 11	x	x	8
Lake of the Woods	SAM 27	x	x	2
LeSueur	SAM 28	x		4
Lincoln	SAM 29	x	x	4
Lyon	SAM 120	x		9
Mahnomen	SAM 184		x	1
Marshall	SAM 227		x	14
Martin	SAM 136	x		8
McLeod	SAM 56	x		12
Mecker	SAM 166	x		10

County	Collection	filmed index	print index	Rolls
Millie Lacs	SAM 30	x	x	6
Morrison	SAM 126	x	x	9
Mower	SAM 31	x	x	5
Murray	SAM 131			66
Nicollet	SAM 170			6
Nobles	SAM 137	x		7
Norman	SAM 57	x	x	7
Olmsted	SAM 32	x	x	7
Otter Tail	SAM 50		x	11
Pennington	SAM 185		x	3
Pennington: Thief River Falls	SAM 186			1
Pine	SAM 33	x	x	10
Pipestone	SAM 34	x		5
Polk	SAM 35	x	x	29
Pope	SAM 36	x	x	6
Ramsey	SAM 48	x	x	90
Red Lake	SAM 187		x	3
Redwood	SAM 190	x		5
Renville	SAM 142	x		8
Rice	SAM 60	x		8
Rock	SAM 138	x		8
Roseau	SAM 192	x	x	10
Scott	SAM 206			5
Sherburne	SAM 196			2
Sibley	SAM 201	x		6
St. Louis: Duluth	SAM 13	x	x	87
St. Louis: Ely	SAM 14	x	x	6
St. Louis: Hibbing	SAM 15	x	x	22
St. Louis: Virginia	SAM 16	x	x	53
Stearns	SAM 76	x	x	23
Steele	SAM 198			6
Stevens	SAM 37	x	x	5
Supreme Court	SAM 103	x	x	7
Swift	SAM 38	x	x	7
Todd	SAM 39	x	x	7
Traverse	SAM 58	x	x	5
Wabasha	SAM 105		x	5
Wadena	SAM 160		x	6
Waseca	SAM 40	x	x	5
Washington	SAM 49	x		13
Watsonwan	SAM 139	x		5
Wilkin	SAM 41	x	x	4
Winona	SAM 132		x	8
Wright	SAM 129			7
Yellow Medicine	SAM 42	x		10

DCHS RECENT ACCESSION / POLICY

Since our spring newsletter a great variety of accessions have been given to the Society. Generous donors have provided us with a wide range of historical information and items that pertain to our county, cities and families.

Following is a brief description of the varied items we have received:

Bread making pan and cover for kitchen display in Nicolina and Ida's kitchen
 Sons of Norway District 1 history
 Cottonwood County History
 Panoramic photo of Co.C, 387th 97 Div., Camp Cody NM, pictured in it is Oscar Bergner, local resident
 USAF Vietnam era camouflage military uniform
 Photo of 10th Annual Lake Geneva Camp and Bible Conference, 1936
 Hendrick Erickson family information
 Guiles family information
 LWV scrapbooks
 R.Wegener Brewery bottle, type of bottle made from 1840-1870
 Some years of Lake Association newsletters, LeHomme Dieu and Latoka
 Photos: Birds eye view of Garfield, High School at night, Swedish Lutheran Church of Alexandria
 Book about the Mike and Heikkinen families titled *The Pocket Lake News* by Bertha Ann (Mike) Weaver. We also have copies to sell from the author.
 Zetetic Club Scrapbooks
 Book by local author Kathy Sletto titled *Keeping Watch*
 Scrapbook of a local paratrooper containing photos and information of the Pacific service, and photos of the Henning family, Fischer Moving Company and local buildings being moved
 Roll-up viewing screen
 Jefferson HS Yearbooks 2006, 2009, 2010
 Photo in frame of North American employees from the 1930s
 Woodland Elementary School photos and history on display boards
 Doily
 Panoramic photo of Co. E., 2nd Regiment MN State Guard, 1942
 Photos of Sportsman's Show at the Armory in 1946
 Class of 1949 Reunion book, also *Boats I remember, One time I... Stories I like to tell. Vols I and II* by Al Seltz
 Advertising plate from Bergsten Store, Garfield MN
 Pen and key fob in plastic case, engraved is Norman Henning, with logo for Doolittles Air Cafe stamped on pen and fob
 Veterans honored at Grand Opening of Doolittles in 2001, (photo of Norman Henning in uniform)
 Advertising wall picture and fan from Engstrom Brothers Funeral Home.

Questions? Call Janet at the Douglas County Historical Society 320-762-0382.

We will not be accepting any clothing accessions or shoes, military uniforms OR large three-dimensional items such as trunks, furniture and accessories, kitchen articles, etc. until further notice. We simply do not have room for storage. In upholding our mission, we will be concentrating our efforts in preserving the collections/items we currently have and organizing/storing them properly.

We will continue to accept IDENTIFIED archive photos that reflect the history of Douglas County.

THANK YOU!

MEMBERSHIP RENEWAL FORM

We value your membership and don't want you to miss out on any of the activities at the Historical Society. Mail your renewal or stop in during office hours, Monday-Friday, 8:30 a.m.— 4:30 p.m.

Governor's Table: Single One-Year Membership: \$30

Governor's Family: Family One Year Membership: \$50

Invest in your Douglas County Historical Society

WE ACCEPT VISA and MASTERCARD

DOUGLAS COUNTY HISTORICAL SOCIETY MEMBERSHIP

___ Governor's Table: Single One-Year Membership \$30

___ Governor's Family: Family One-Year Membership: \$50

Name _____

Address

Type of Card: VISA/MASTERCARD

Card Number _____ Exp. Date _____

**Make checks payable to:
Douglas County Historical Society**

The first Douglas County Historical Society met in 1880 and another group calling itself "The Historical Society" met in Alexandria in the early 1900s. Constant Larson was the leader. Keep the Society strong and vibrant! Renew YOUR membership today.



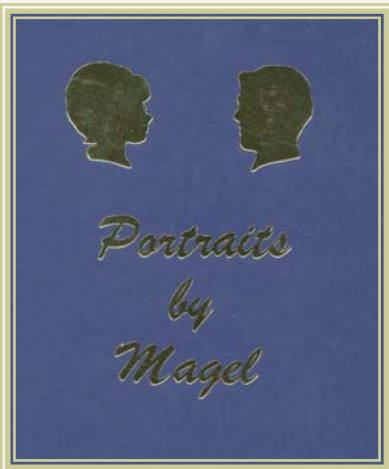
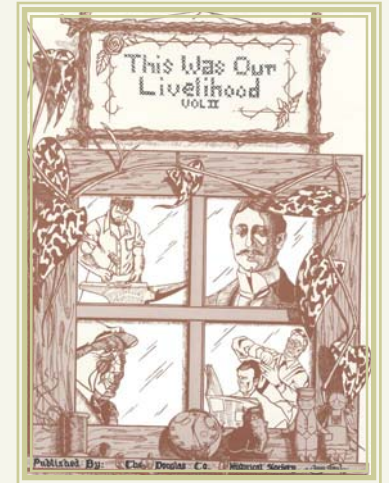
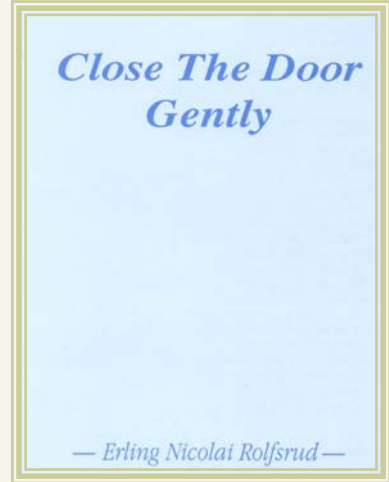
Constant Larson

SHOP DCHS!



Stop in to see our Christmas gift display and pick up unique stocking stuffers. Be sure to check out our clearance sale items!

Pewter Covered Beer Stein	\$25 (original price \$50)
Alexandria Brewery Beer Stein	\$25 (original price \$38.50)
Alexandria Sesquicentennial Crock	\$20 (original price \$25)
Coffee Mug	\$5 (original price \$12.50)
<i>Make it Minnesotan!</i> Cookbook	\$10 (original price \$12.50)
<i>Close the Door Gently</i> by Erling Rolfsrud	\$1 (original price \$5)
<i>This Was Our Livelihood-Vol 2</i> by DCHS	\$5 (original price \$13)
<i>Portraits By Magel</i> by DCHS	\$15 (original price \$42.50)
<i>Douglas County: A Retrospective</i>	\$25.50 (member price)
<i>Spruce Hill Remembered</i>	\$50



**DOUGLAS COUNTY
HISTORICAL SOCIETY
BOARD OF DIRECTORS**

President: Jeff Schiffman
 Vice-President: Pat Kennedy
 Secretary: Kaye Zebarth
 Directors: Jeanne Batesole
 Jim Chan
 Lloyd Flaaten
 Jodi Hintzen
 Carol Neumann
 Larry Skoglund
 Student Assoc.: Kreg Anderson

**SPRUCE HILL CHURCH
BOARD OF DIRECTORS**

President: Joel Blank
 Vice-President: Bruce Haugen
 Secretary: Melissa Haugen
 Directors: Kim Bredeson
 Don Friese
 Marge Lusty
 DCHS Board Reps: Jodi Hintzen
 Carol Neumann

DCHS INFORMATION

Telephone: 320-762-0382
 Fax: 320-762-9062
 Office Hours: Monday – Friday 8:30-4:30
 House tours: Monday – Friday 9-3
 Public Research Center: Monday – Friday 9-4

The mission of the Douglas County Historical Society is to discover, preserve and disseminate the history of the county and its people.

**DCHS WELCOMES
NEW & RENEWING MEMBERS**

Bruce Aga	Marilee & Louis Larkey
Carmen Anderson	Susan Laubenheimer
Rock & MaryLou Anderson	Loren & Kathryn Liesemeyer
Margine Benson	Gary & Cindy Lund
Jeff & Nancy Berg	Kurt Marston
Mari-Ann Bartlett	Linda Meichsner
Pam Bell	Matthew Meyers
Melinda Borum & Carl Towley III	Mary New
Geraldine Carlson	Diane Riedel
Sandra Dittberner	Duane Rosell
Lloyd Flaaten	Dave Schultz
Rosemary Grundei	Jeff & Michele Shiffman
Dr. William & Elizabeth Heegaard	Evadne Steiner
Jerry Jacobson	Romayne Strand
Marlys Jensen	Joanne Thomas
Lenore Jesness	MaryLou Trisko
Burke Kiger	Ron Way
Dave Krueger	

DCHS MEMORIALS

*For Harold Bartz from: H. James & Magel Boyd
 For Harold Bartz from: Leon & Mary Hovland
 For Pearl Johnson from: Roger & Caryn Rosengren
 For Myron Larson from: Rachel Barduson
 For Myron Larson from: Arlue Beheng
 For Myron Larson from: Joan Larson
 For Myron Larson from: Romayne Strand
 For Arlene Mix from: Ray Engstrand
 For Arlene Mix from : Barb & Morris Grover
 For Arlene Mix from Eleanor Thompson
 For Bill Platto from: Don & Lorraine Anderson Heckman*

DCHS STAFF

Executive Director:	Rachel Barduson
Executive Assistant/Volunteer Coordinator:	Kim Dillon
Accessions Manager:	Janet Nelson
Collections Technician:	Mary Isaac
Research Librarian:	Nancy Norling
Receptionist:	Annie Skoglund

**DOUGLAS COUNTY
HISTORICAL SOCIETY**

1219 Nokomis St
Alexandria, MN 56308-3712


We're on the Web!
www.dchsmn.org

NON PROFIT ORG.
U.S. POSTAGE
PAID
PERMIT NO. 83
ALEXANDRIA, MN 56308

Return Service Requested

2010-2011 CALENDAR

November 25-26	Closed for Thanksgiving Holiday
December 4	Christmas Open House/Ethnic Baked Goods
December 24	Closed for Christmas Eve
January 3	Closed
February 1	Bean Soup with Knute
April 22	Closed for Good Friday
April 24	Sunrise Service at Spruce Hill Church
April 26	Annual Meeting in the Governor's Room/The Gables
May 19	Annual Yard Sale
May 30	Closed for Memorial Day Observance
June 11	Annual WWII Themed Hangar Dance/Alexandria Airport
July 4	Closed for Independence Day Observance
August 18 - 21	Douglas County Fair
September 5	Closed for Labor Day
November 24-25	Closed for Thanksgiving Day Holiday
December 3	Christmas Open House
December 26	Closed for Christmas Day Observance
December 26	Spruce Hill Christmas



*Mark your
Calendars for
Douglas
County
Historical
Society
Events!*

Go online at: www.dchsmn.org for updated calendar of events, merchandise and more information.

ALSO:

Discover us on **Facebook!** Simply type **facebook/dchsmn**, follow the prompts, add it to your favorites and join our growing number of fans!

Newsletter Editor, Kathryn Liesemeyer
Printing by *Quality Printing Co.* of Alexandria